



Cisco para ISPs

Fortaleza – CE – 23/08/2018

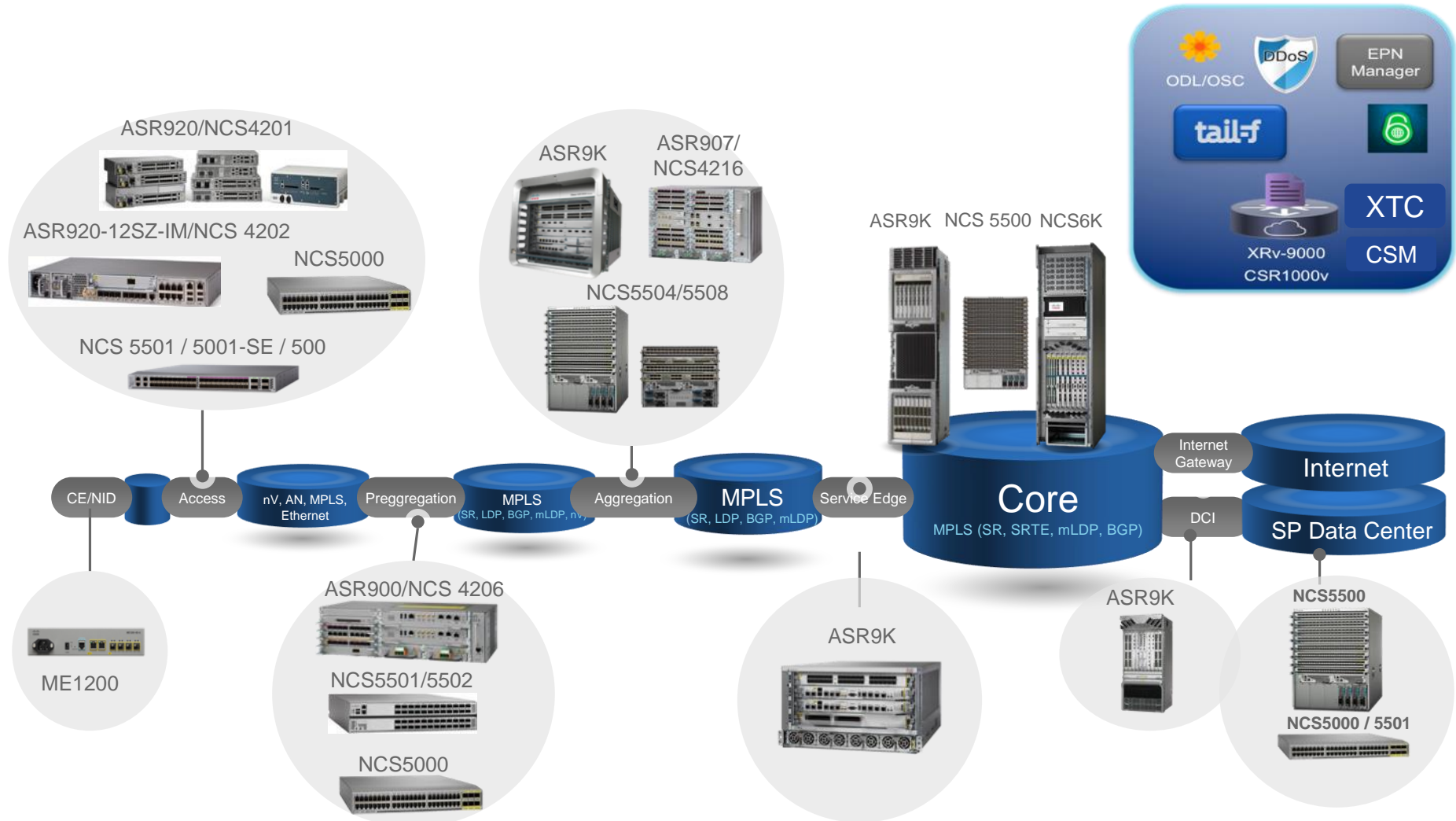


Infraestructura de TI para iSPs

Portfolio de Roteadores Cisco



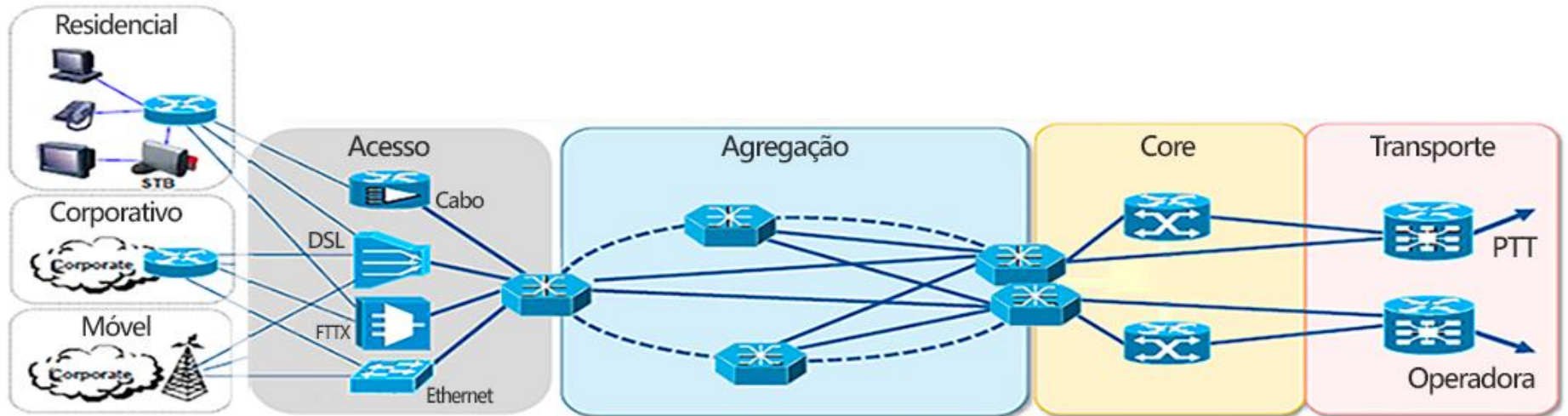
Service Provider Access Portfolio





Segmentação

Topologia de Referencia



CPE
WiFi
SD WAN
Security
IPv6

FTTH, PON
GPON, STP,
REP, 802.1Q
Etc,

OSPF, MPLS,
VPLS, L3VPN

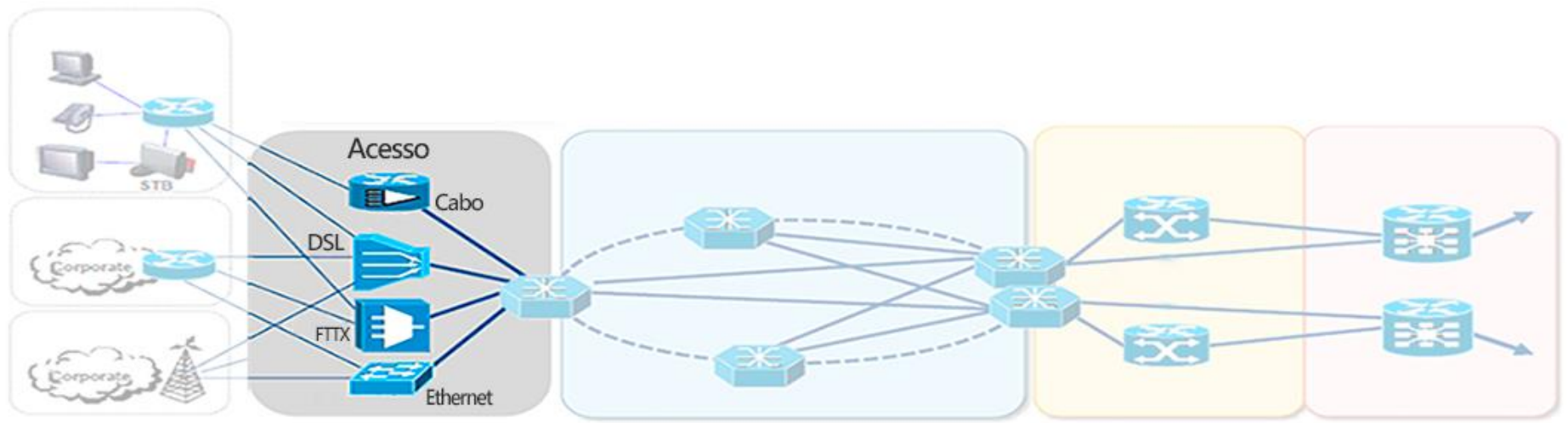
Segment Routing
BGP-eVPN

Full BGP
BNG
(PPPoE/IPoE/RADIUS)
CGNAT
NAT64

BGP
Full BGP
IPv4/IPv6

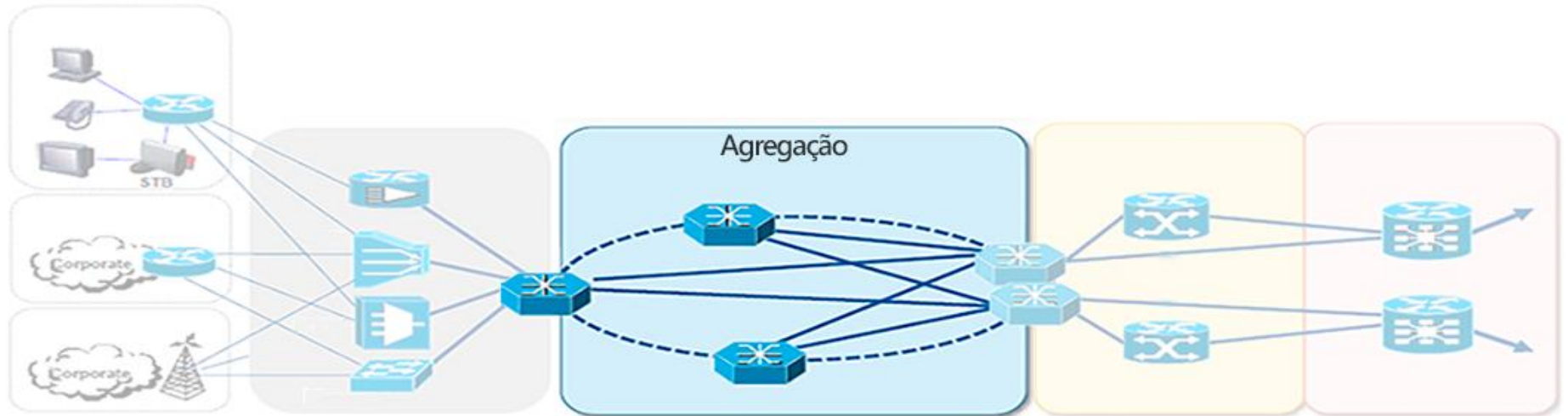


Acesso





Agregação



ASR920



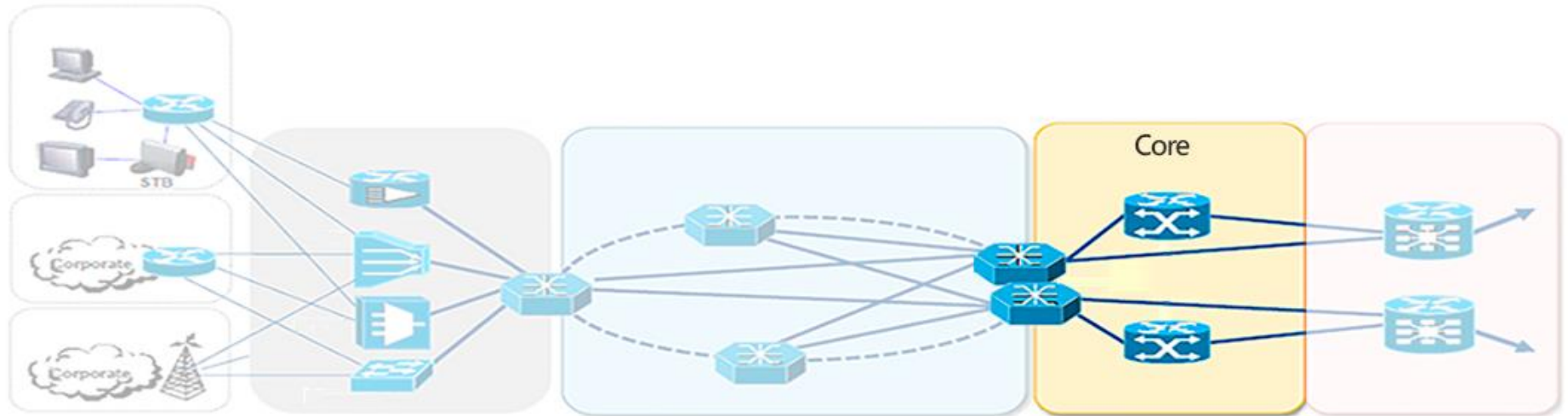
NCS 540



NCS5000 /
NCS5500



Borda / Core



ASR1001



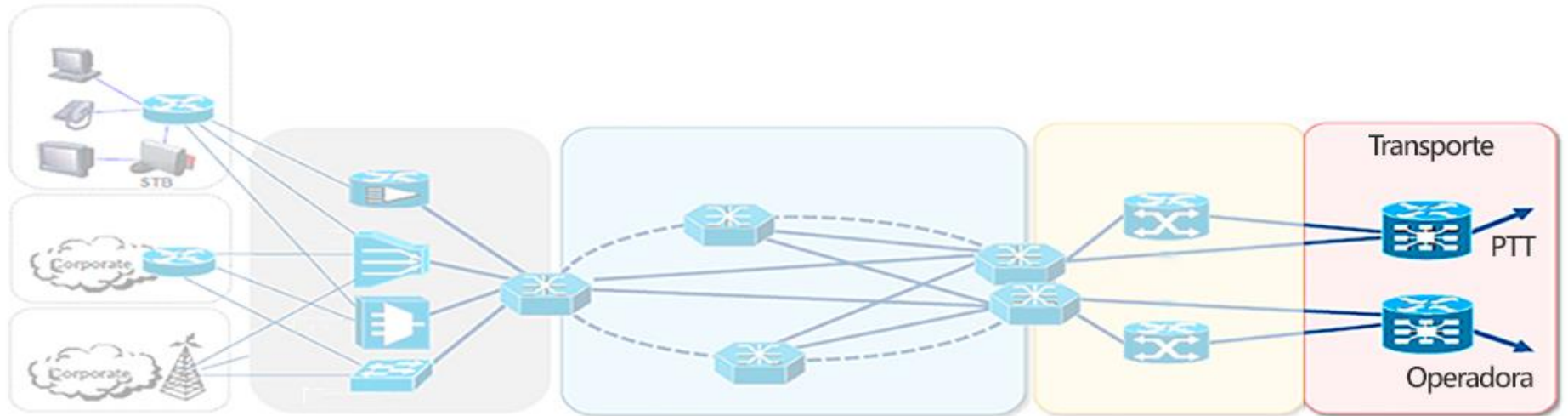
ASR9001



ASR9901



Transporte



ASR1001



ISR4000 – ISR4351



ASR9001

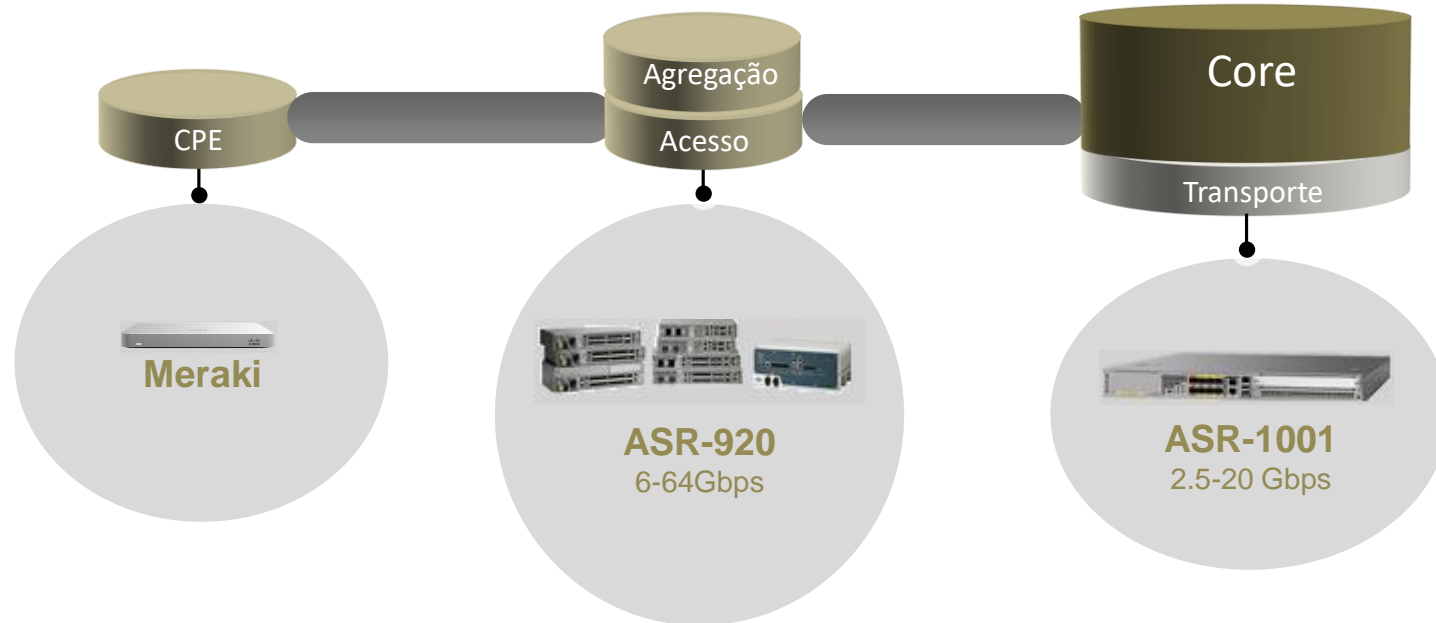


ASR9001

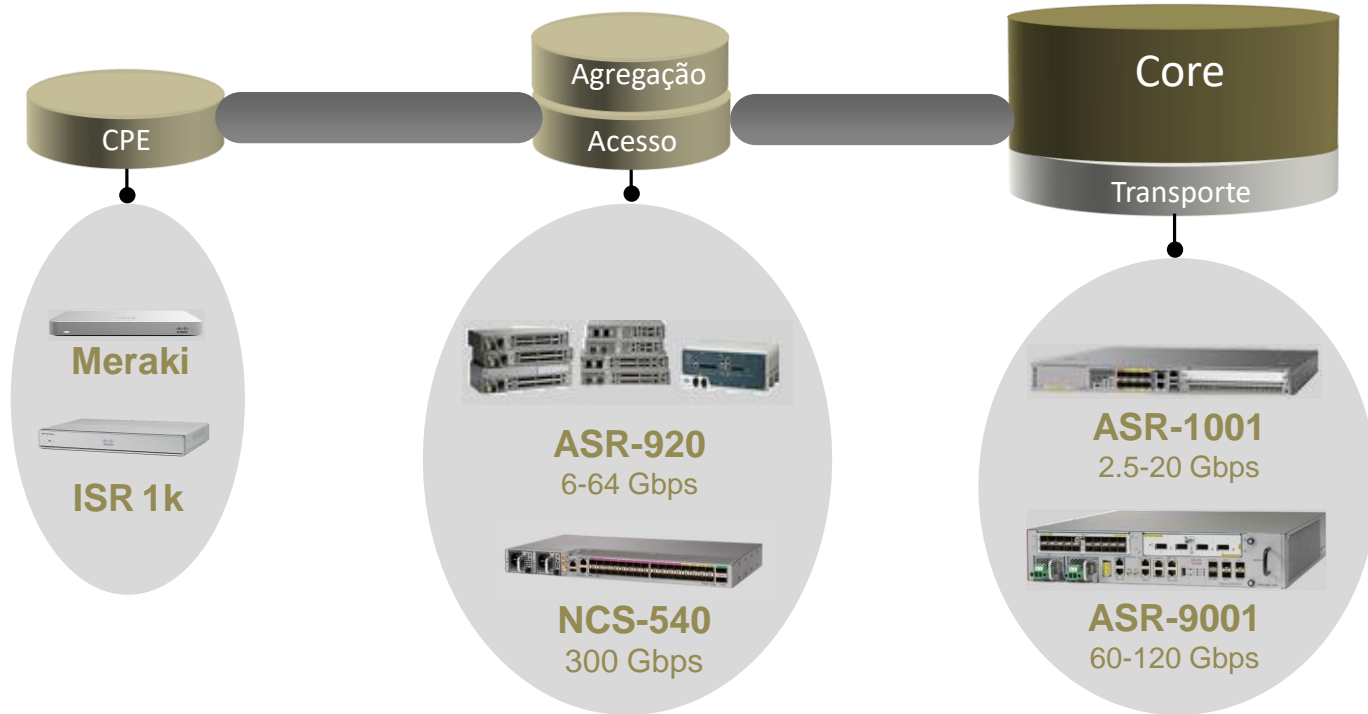


Topologia

Topologia Base

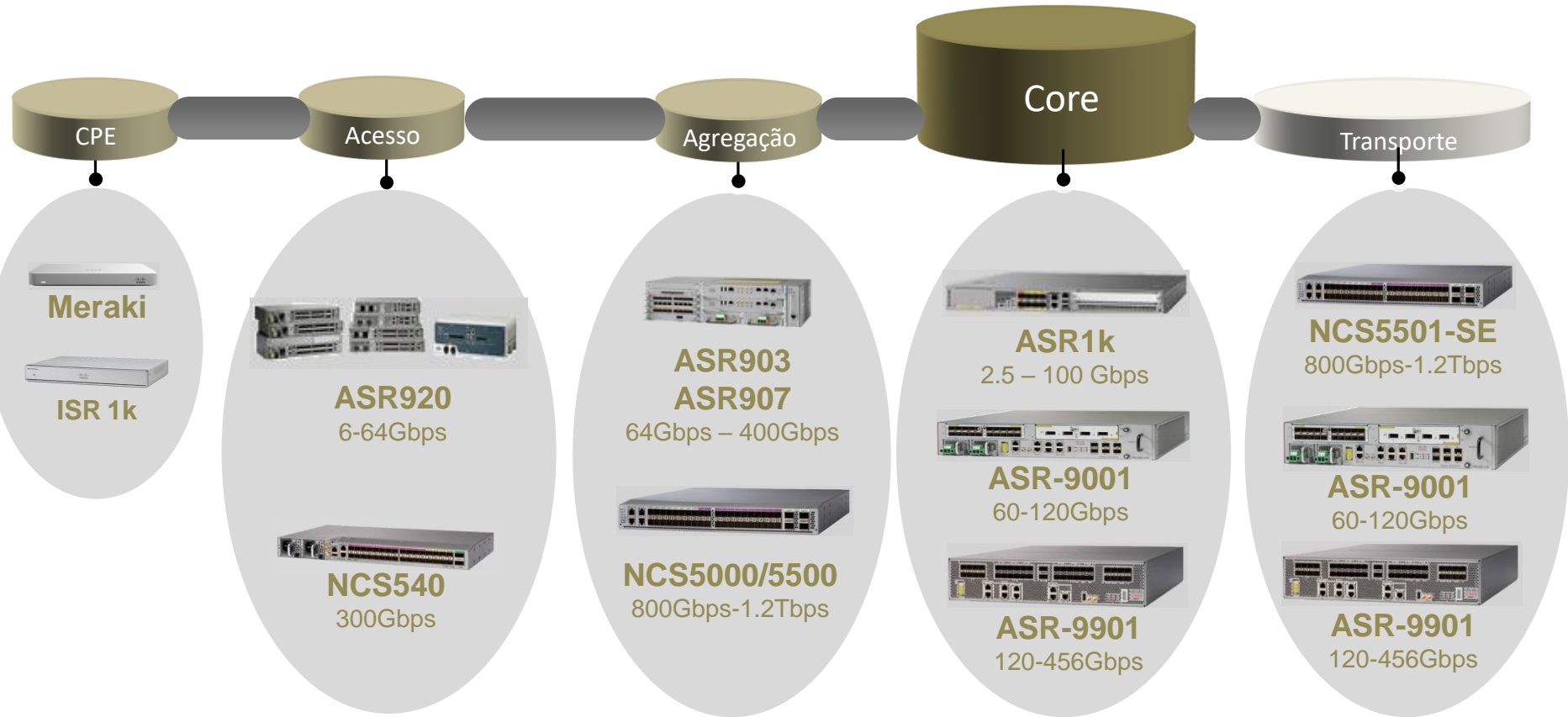


Topologia Média





Topologia Grande





Destiques



ASR920

Throughput até 12Gbps





ASR1001

Throughput 2.5 a 20Gbps

Network Interface Modules

- SSD Drive
- ISR4K NIM Modules

Built-in I/O

- 2x10G
- 6x1G
- Multipoint MACsec support

Management / USB Ports

- RJ45 Management Port
- 2x USB Ports

System Access

- Auxiliary Port
- RJ45 Console

Pay As You Grow

- 2.5G Default
- Upgradeable to 5G, 10G, and 20G
- Up to 8G Crypto Throughput

Control Plane

- Quad Cores; each core clocked at 2.0G Hz
- 8G DDR3 (default) shared memory



Multi-Core Network Processor

- 31 Cores
- 4 Packet Processing Engines / Core
- 124 Threads are processed simultaneously

Shared Port Adapter

- 1x SPA slot

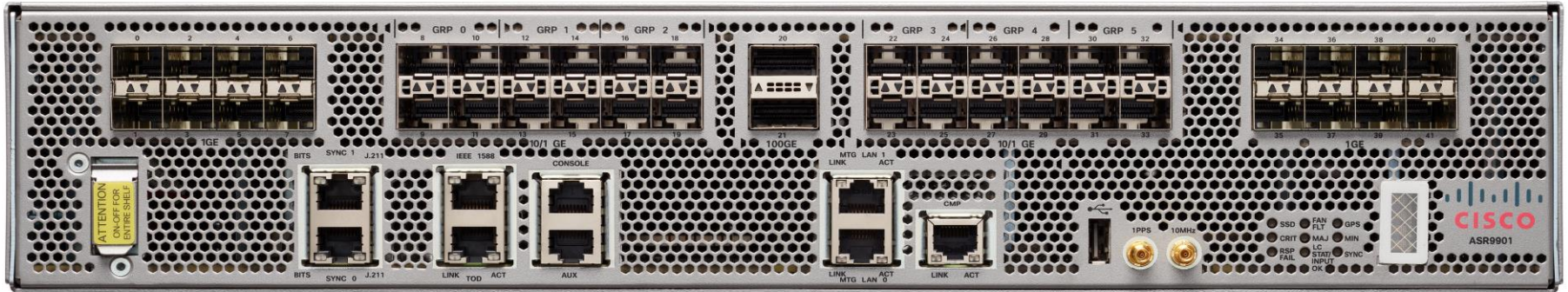


Novidades



ASR9901

Throughput 120 a 456Gbps



0	2	4	6
1	3	5	7

1GE

GRP 0		GRP 1		GRP 2	
8	10	12	14	16	18
9	11	13	15	17	19

10/1 GE

20
21

100GE

GRP 3		GRP 4		GRP 5	
22	24	26	28	30	32
23	25	27	29	31	33

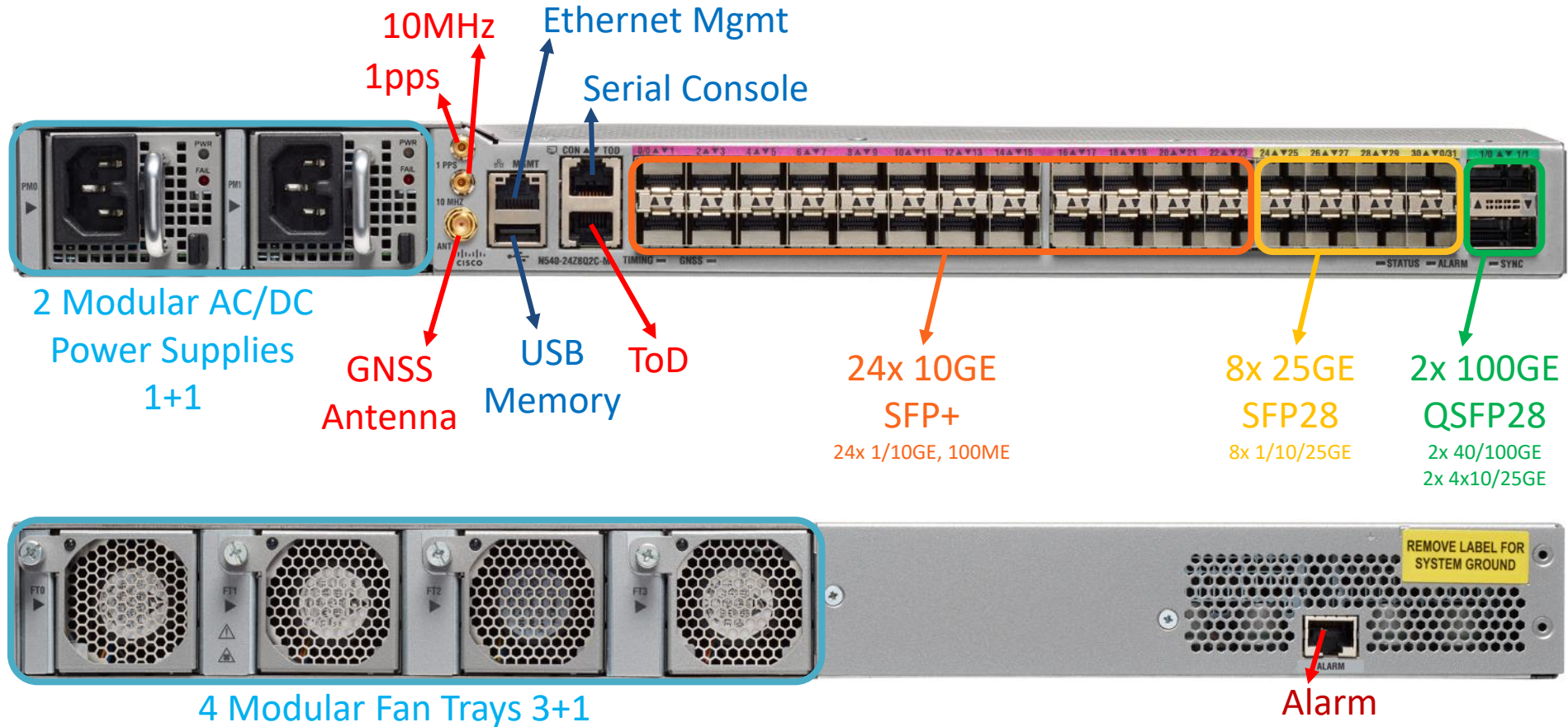
10/1 GE

34	36	38	40
35	37	39	41

1GE



NCS 540





Roteadores Cisco para iSPs



<https://iSP.express/cisco/roteadores/>



Soluções Financeiras

Solução Financeira



Leasing Financeiro



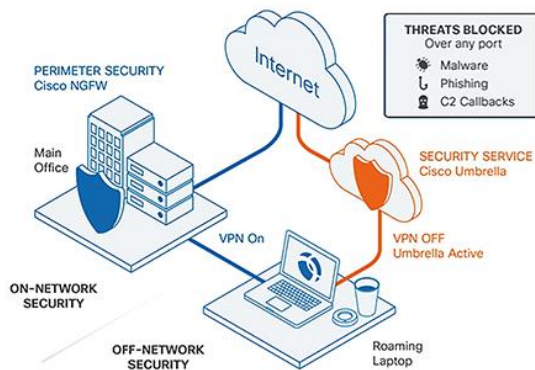
Cisco Umbrella

Segurança Open DNS



Cisco Umbrella

Segurança Open DNS





Cisco Umbrella

PART NUMBER	Qde Mínima de licenças	Qde Máxima de licenças	PREÇO LICENÇA UMBRELLA	
			Preço Unitário Anual	Preço Unitário Mês/Usuário
UMB-PROFESSIONAL-1Y_10-99-BR	10	99	R\$105,74	R\$8,81
UMB-PROFESSIONAL-1Y_100-249-BR	100	249	R\$91,40	R\$7,62
UMB-PROFESSIONAL-1Y_250-499-BR	250	499	R\$79,63	R\$6,64
UMB-PROFESSIONAL-1Y_500-999-BR	500	999	R\$62,27	R\$5,19
UMB-PROFESSIONAL-1Y_1000-2499-BR	1.000	2.499	R\$52,68	R\$4,39
UMB-INSIGHTS-K9-1Y_10-99-BR	10	99	R\$157,58	R\$13,13
UMB-INSIGHTS-K9-1Y_100-249-BR	100	249	R\$136,99	R\$11,42
UMB-INSIGHTS-K9-1Y_250-499-BR	250	499	R\$120,28	R\$10,02
UMB-INSIGHTS-K9-1Y_500-999-BR	500	999	R\$105,45	R\$8,79
UMB-INSIGHTS-K9-1Y_1000-2499-BR	1.000	2.499	R\$90,70	R\$7,56
PARTNUMBER	Qde Mínima de licenças	Moeda USD R\$3,92	PREÇO de VENDA	
			Preço Untit Anual	Preço Unit Mês/Usuário
			* para empresas com 10 usuários	
UMB-EASY_PROTECT-1Y_100-BR	100	USD	R\$208,94	R\$1,74
			* para empresas com 20 usuários	
UMB-EASY_PROTECT-1Y_100-BR	100	USD	R\$208,94	R\$0,87
			* para empresas com 30 usuários	
UMB-EASY_PROTECT-1Y_100-BR	100	USD	R\$208,94	R\$0,58



Treinamento e Capacitação



<https://iSP.express/cisco/netacad/>



Cisco para ISPs

João Paulo Camargo

Obrigado!

<https://isp.express>

joao.paulo@isp.express